



**3 in 1 foam trolley:
Detergent, Wash, Disinfectant
for effective disinfection**

**NEW
VERSION**

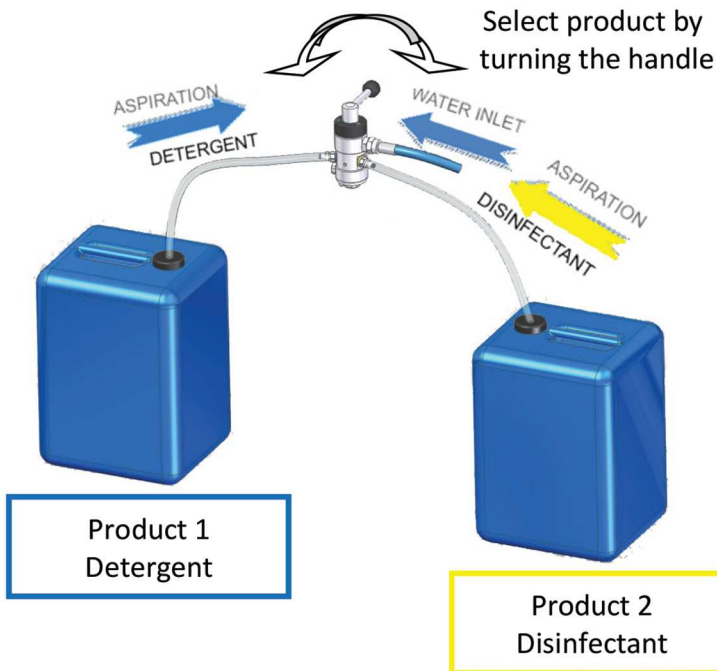


* Delivered naked: spray gun, single lance, nozzle, turbo nozzle, hose and cans not provided

Technology :

The mobile trolley is connected on fix water network or on high pressure cleaner system. Trolley is available in two versions, with injector by-pass 1 product or injector 2 products.

1 Product	2 Products
<ul style="list-style-type: none"> - Aspiration of detergent or disinfectant - Rinsing mode 	<ul style="list-style-type: none"> - Aspiration detergent - Aspiration disinfectant - Rinsing mode



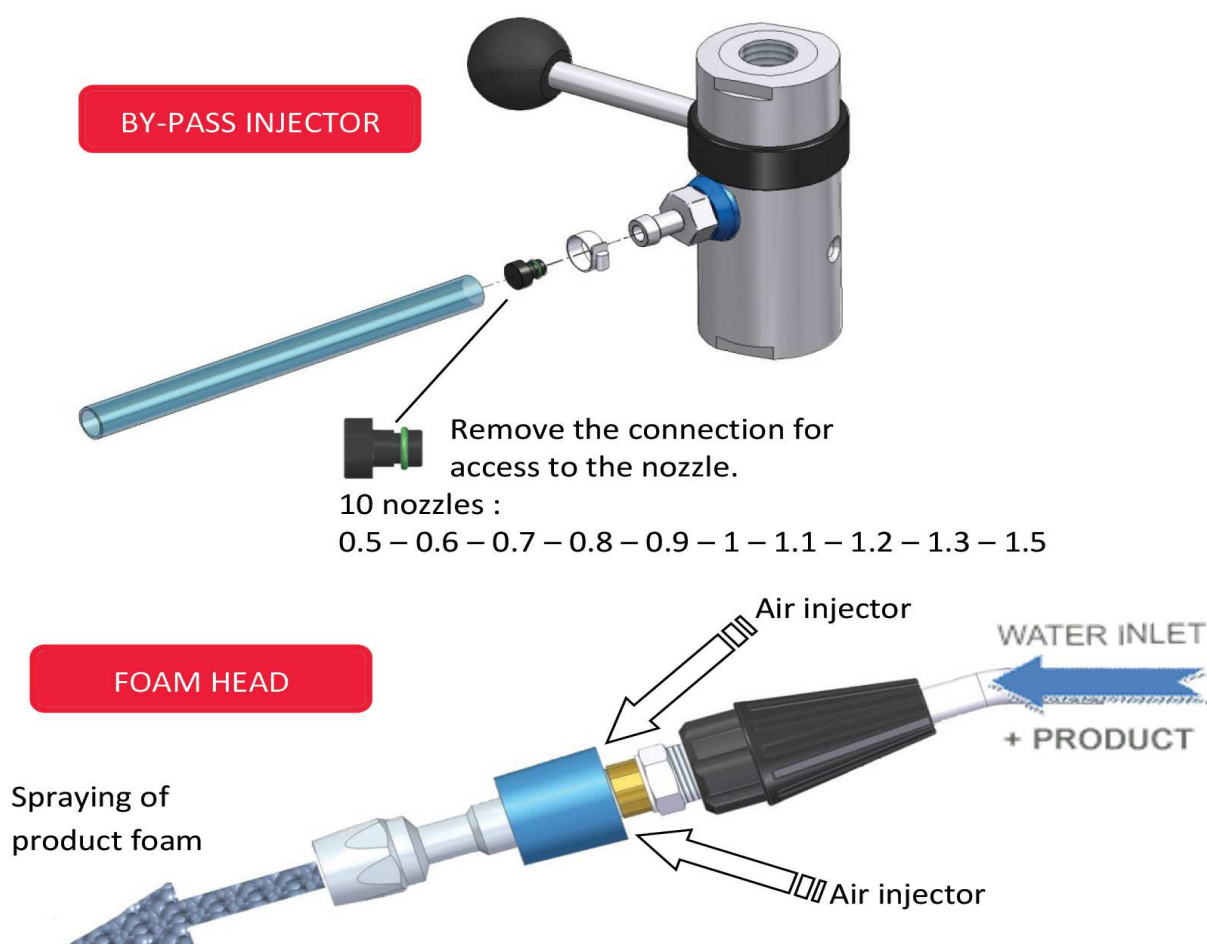
Standard accessories :

Aluminum reel (empty)
Foam head made of stainless steel
By-Pass injectors
Nozzle

Compatible with standard accessories cleaner or existing installation. Gun, lance, rotating nozzle, pipe not supplied with trolley foam.
Fits on couplers.

Dosage :

The dosing is adjusted by one of the 10 nozzle inserts which are included in the consignment. (nozzle size of 0.5 to 1.5 mm).



Feature :

The trolley is made of hot galvanized steel for optimum strength. Equipped with tubeless wheels Ø260mm. Frame supports two 20 liters containers.

Aluminum reel to equip with existing cleaner pipe. It is recommended to use the trolley with 35m maximum for a good foam quality and aspiration efficiency.